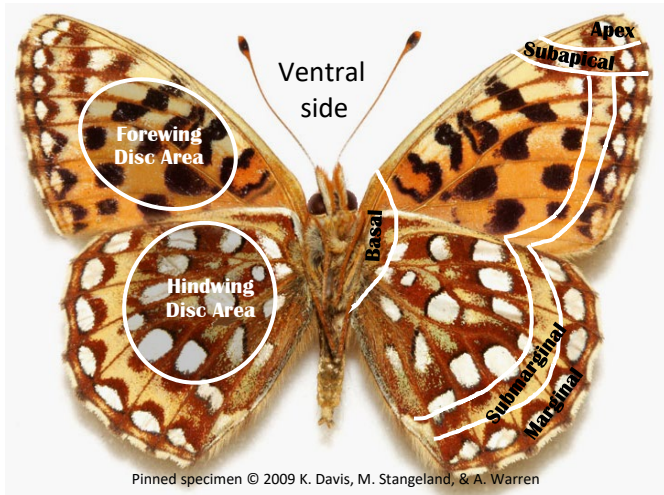


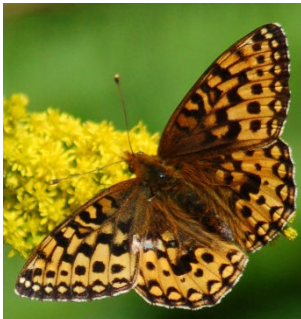
Oregon Silverspot Butterfly

Speyeria zerene hippolyta

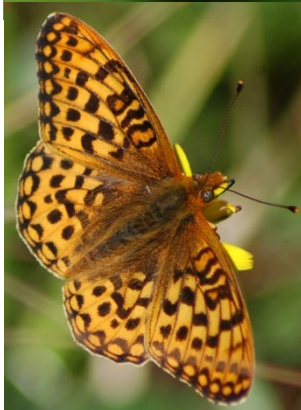
Species Identification Card



A medium-sized, orange butterfly known for its bright metallic silver spots on the ventral hindwing disc and marginal band. It has black spots on the dorsal wing surface and ventral forewing disc area and a cream to yellowish submarginal band. The dorsal wing surface has a black marginal band with orange spots. Forewing length approx. 1 inch.



Females have dark forewing margins with thin white patches. They are slightly larger than males with wider abdomens.



Males have thinner black margins often separated by orange. Their abdomens are thinner and have claspers.

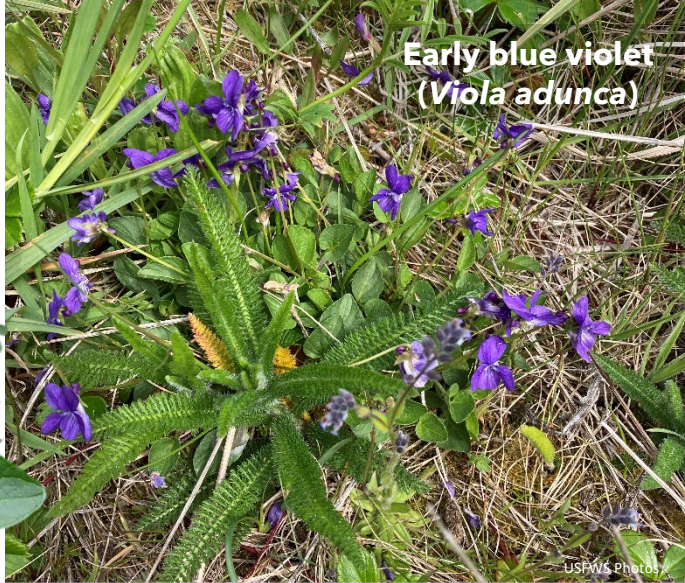


Mating pair with closed wings.

Oregon Silverspot Butterfly

Speyeria zerene hippolyta

Native Plant Relationships



USFWS Photos

Oregon silverspot butterflies can be found in coastal grasslands from Northern California to Southern Washington. Caterpillars are specialists and rely on early blue violets for food. Butterflies can be found nectaring on a variety of flowering species from early July to the middle of September.

Oregon silverspot are most active on sunny, warm, & calm days. Male search behavior is erratic and low to the ground. Females fly steadily and quickly in search of a good spot to lay eggs, regularly landing and walking. Adults often bask in sunny locations and nectar on these native flowering species.

Common Yarrow
Achillea millefolium



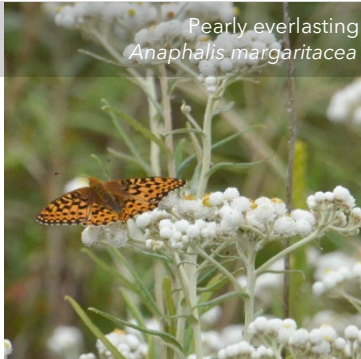
Edible thistle
Cirsium edule



Western & dune goldenrods
Solidago canadensis & *spatulata*



Pearly everlasting
Anaphalis margaritacea



California aster
Aster chilensis

